



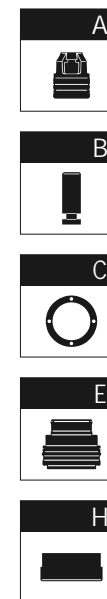
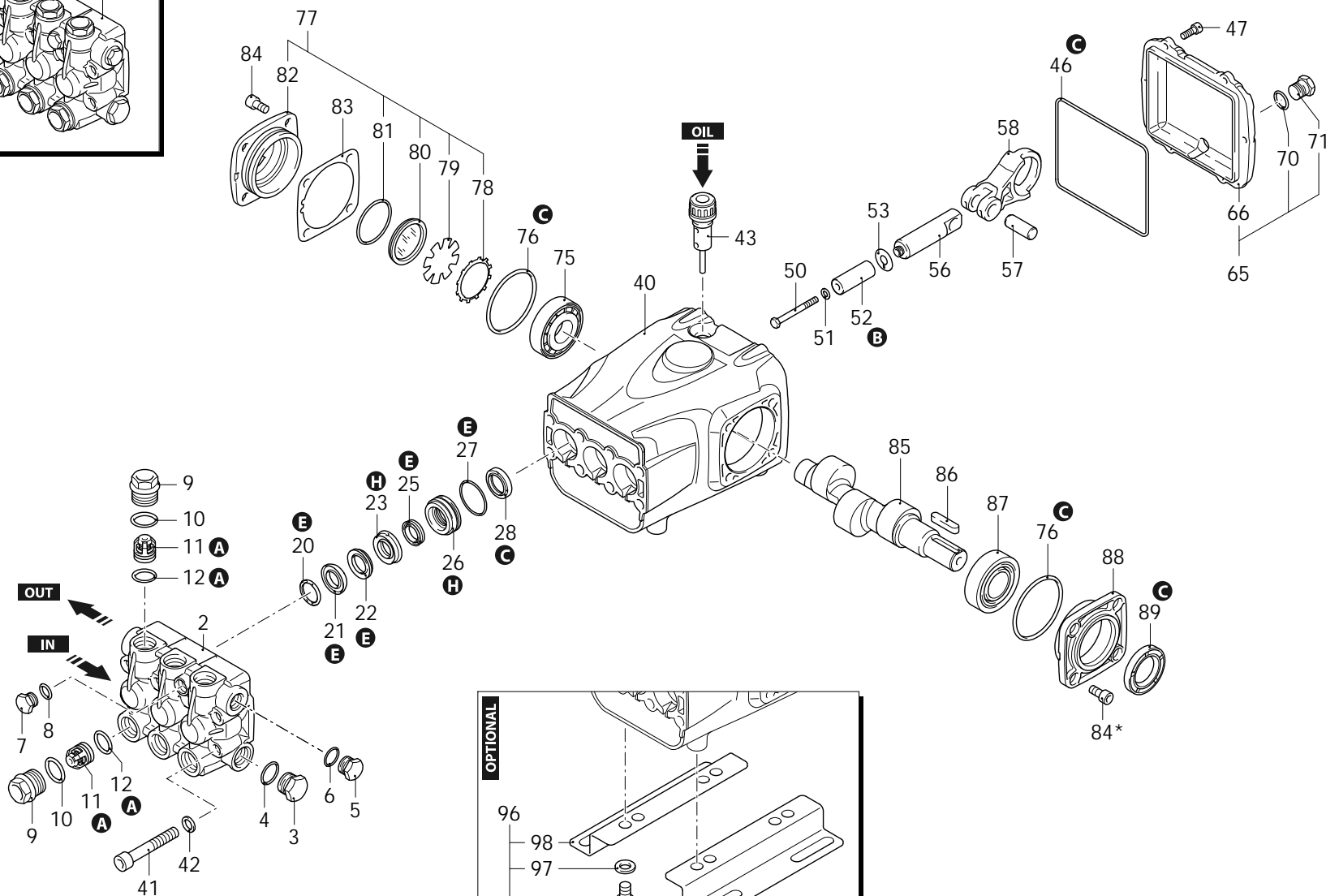
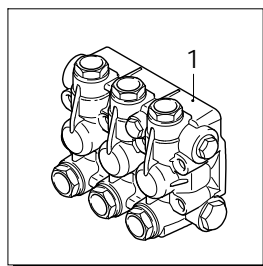
Series 402

RG

N

1450rpm

ø 24mm



AR_s402-02_v01

29/09/2023



Series 402

RG

N

1450rpm

ø 24mm

P	Code	Description	Q	Note	Validity
1	4029201	Head assembly	Ø 18 nickel plated	1	
2	4020190	Head	nickel plated	1	
3	960870	Plug	1/2" G nickel	1	Screw with Loxeal 55-14 / C=30Nm
4	180101	O-ring	Ø 17,5x2	1	Lubricate with grease Molykote PG54
5	1981180	Plug	3/8" G nickel	1	Screw with Loxeal 55-14 / C=20Nm
6	740290	O-ring	Ø 14x1,78	1	Lubricate with grease Molykote PG54
7	1380690	Plug	1/4" G nickel	1	Screw with Loxeal 55-14 / C=15Nm
8	820510	O-ring	Ø 10,82x1,78	1	
9	4020200	Plug	nickel	6	Screw with Loxeal 55-14 / C=54Nm
10	960160	O-ring	Ø 17,86x2,62	6	Lubricate with grease Molykote PG54
11	1389051	Complete valve		6	
12	880830	O-ring	Ø 15,54x2,62	6	
20	960110	Ring	support Ø 18	3	
21	1382740	Water seal	Ø 18	3	Lubricate with grease Molykote PG54
22	2340310	Ring	anti-extrusion	3	
23	2980070	Piston guide	front Ø 18	3	
25	880330	Water seal	Ø 18	3	
26	1942480	Piston guide	rear Ø 18	3	
27	820490	O-ring	Ø 34,65x1,78	3	
28	1940560	Ring	seal	3	
40	4020010	Pump body		1	
41	2980100	Screw	TCEI M10x70	8	C=53Nm
42	650530	Washer		8	
43	1140370	Oil plug	with oil dipstick	1	
46	1940410	O-ring	Ø 132x3	1	
47	1200430	Screw	TCEI M6x16	6	Screw with Loxeal 55-14 / C=10Nm
50	1941640	Screw	TE M6x60	3	Screw with Loxeal 55-14 / C=7Nm
51	1340600	Washer		3	
52	1941020	Piston	Ø 18	3	
53	1383190	Plate		3	
56	1940960	Piston	guide	3	
57	1940060	Pin		3	
58	2980010	Connecting-rod		3	Lubricate with grease Molykote BR2 PLUS
65	4029001	Cover	complete	1	
66	4020030	Cover		1	
70	740290	O-ring	Ø 14x1,78	1	Lubricate with grease Molykote PG54
71	1980740	Plug	3/8" G brass	1	C=20Nm
75	1140420	Bearing		1	

P	Code	Description	Q	Note	Validity
76	1941380	O-ring	Ø 66,34x2,62	2	
77	4029000	Cover	complete	1	
78	4020080	Ring		1	
79	4020070	Plate		1	
80	4020160	Level gauge		1	
81	3680250	O-ring	Ø 45,69x2,62	1	
82	4020150	Cover		1	
83	4020100	Shim 0.05mm		1	
83	4020110	Shim 0.10mm		1	
83	4020120	Shim 0.19mm		1	
83	4020130	Shim 0.25mm		1	
84	850370	Screw	TCEI M8x16	4	C=24,5Nm
84*	850370	Screw	TCEI M8x16	4	C=24,5Nm
85	2980250	Shaft	1 marked	1	
86	3200230	Key		1	
87	1941370	Bearing		1	
88	4020040	Cover		1	C=25Nm
89	820681	Ring	seal	1	Screw with Loxeal 55-14 / C=10Nm
96	2748	Foot kit		1	
97	200231	Washer		4	
98	1940370	Foot		2	
99	1940380	Screw	TCEI 10x18	4	C=50Nm
A	2864	Valve kit		1	
B	2872	Piston kit	Ø 18	1	
C	47083	Oil seal kit		1	
E	46848	Water seal kit	Ø 18	1	
H	42172	Piston guide kit	Ø 18	1	

Revision: 1

Oil type: SAE 15W40

Attachment:

Date: 29/09/2023

Oil quantity: 0,960 Kg

*C= Tightening torque (Tolerance +0 ÷ -10%)*** = Not present for electric pump*

25405 - RG 21.20 H N